



DEPARTMENT OF MATHEMATICS
AND COMPUTER SCIENCE

COLLEGE OF SCIENCE

UNIVERSITY OF THE PHILIPPINES BAGUIO

Stability and Boundary Controllability of a Linearized Model of Flow in an Elastic Tube

STABILITY AND BOUNDARY CONTROLLABILITY OF A LINEARIZED MODEL OF FLOW IN AN ELASTIC TUBE

GILBERT PERALTA AND GEORG PROBST*

ABSTRACT.

We consider a model describing the flow of a fluid inside an elastic tube that is connected to two tanks. We study the linearized system through semigroup theory. Controlling the pressures in the tanks renders a hyperbolic PDE with boundary control. The linearization induces a one-dimensional linear manifold of equilibria; when those are factored out, the corresponding semigroup is exponentially stable. The location of the eigenvalues in dependence on the viscosity is discussed. Exact boundary controllability of the system is achieved by the Riesz basis approach including generalized eigenvectors. A minimal time for controllability is given. The corresponding result for internal distributed control is stated.

2010 MATHEMATICS SUBJECT CLASSIFICATION.

35L50, 47D03, 93C20

KEYWORDS.

Flow in elastic tube, semigroup, exponential stability, boundary control system, exact controllability, Riesz basis.

CITATION.

G. Peralta and G. Propst, *Stability and boundary controllability of a linearized model of flow in an elastic tube*, ESAIM Control, Optimisation and Calculus of Variations 21 (2), pp. 583-601, 2015.

DOI: <https://doi.org/10.1051/cocv/2014039>

The first author is supported by the grant *Technologiestipendien Südostasien* in the frame of ASEA-Uninet granted by the Austrian Agency for International Cooperation in Education and Research (OeAD-GmbH) and financed by the Austrian Federal Ministry for Science and Research (BMWF).

*Institut für Mathematik und Wissenschaftliches Rechnen, NAWI Graz, Karl-Franzens-Universität Graz, Heinrichstrasse 36, A-8010 Graz, Austria

Department of Mathematics and Computer Science, University of the Philippines Baguio, Governor Pack Road, Baguio, 2600 Philippines. Email: grperalta@up.edu.ph.

Disclaimer. This is the preprint version of the submitted manuscript. The contents may have changed during the peer-review and editorial process. However, the final published version is almost identical to this preprint. This preprint is provided for copyright purposes only. For proper citation, please refer to the published manuscript, which can be found at the given link.

TABLE OF CONTENTS

The Model and its Linearized Version	1
Well-posedness of the Linear System	4
Spectral Properties and Uniform Exponential Stability	7
A Boundary Control System	13
System with Distributed Control	20
Appendix	20
References	21

1. THE MODEL AND ITS LINEARIZED VERSION

Consider an elastic cylindrical tube of length ℓ filled with an incompressible liquid and each end of the tube is linked to one of two tanks, both with horizontal cross section A_T (see Figure 1). Let $u(t, x)$, $A(t, x)$ and $p(t, x)$ denote the fluid velocity, the vertical cross section of the tube and the pressure in the tube, respectively, at time $t \geq 0$ and position $x \in [0, \ell]$. The rest cross section of the tube is denoted by $A_0 = \pi r_0^2$, where r_0 is the inner rest radius, and the ambient pressure is denoted by p_a . According to Laplace's law for cylinders and Hooke's law for the radial tension in the tube material, the equation of state, as in Rath and Teipel [18], is given by

$$A(t, x) = A_0 \left(1 + \frac{r_0}{sE} (p(t, x) - p_a) \right)^2, \quad (1.1)$$

where E is the Young's modulus and s is the thickness of the tube material. We note that longitudinal tension is not taken into account in this model, i.e., the radial tension at x is independent of the neighborhood of x .

Using Euler's continuity equation and the law of balance of momentum, the cross sectional area and the fluid velocity are given by, as in Ottesen [17],

$$\begin{cases} \frac{\partial A}{\partial t} = -u \frac{\partial A}{\partial x} - A \frac{\partial u}{\partial x}, & t > 0, 0 < x < \ell, \\ \frac{\partial u}{\partial t} = -u \frac{\partial u}{\partial x} - \frac{sE}{2\rho r_0} (A_0 A)^{-1/2} \frac{\partial A}{\partial x} - \frac{8\pi\mu}{\rho A_0} u, & t > 0, 0 < x < \ell, \end{cases} \quad (1.2)$$

where ρ and μ are the constant density and the viscosity of the fluid respectively. The last component of the right hand side of the balance equation in (1.2) represents friction, according to the model of Hagen-Poiseuille.

We are interested in the well-posedness, stability and controllability of the linearized model. In this work, we consider forcing pressures that are applied on top of the tanks. The pressure at the end of the tube is then the sum of the ambient

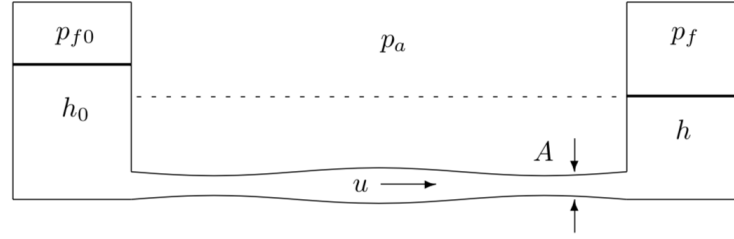


FIGURE 1. An elastic tube connected to two tanks.

pressure, the hydrostatic pressure and the forcing pressure. This gives the boundary conditions

$$p(t, 0) = p_a + \rho g h_0(t) + p_{f0}(t), \quad (1.3)$$

$$p(t, \ell) = p_a + \rho g h(t) + p_f(t), \quad (1.4)$$

where g is the gravitational constant and p_{f0} and p_f are the forcing pressures applied to the left and right tank at $x = 0$ and $x = \ell$, respectively. In terms of the cross sectional area we can see from the equation of state (1.1) that these boundary conditions become

$$A(t, 0) = A_0 \left(1 + \frac{r_0}{sE} (\rho g h_0(t) + p_{f0}(t)) \right)^2, \quad t > 0, \quad (1.5)$$

$$A(t, \ell) = A_0 \left(1 + \frac{r_0}{sE} (\rho g h(t) + p_f(t)) \right)^2, \quad t > 0, \quad (1.6)$$

Note that the tube ends' cross sections are free to adjust to the inner pressure that is prescribed by the pressures at the bottom of the tanks.

The level heights h_0 and h in the tanks are state components starting at some given initial height h_0^0 and h^0 , respectively, and are coupled to the cross section and fluid velocity by

$$\begin{cases} \frac{dh_0}{dt} = -\frac{1}{A_T} A(t, 0) u(t, 0), & t > 0, \\ \frac{dh}{dt} = \frac{1}{A_T} A(t, \ell) u(t, \ell), & t > 0, \end{cases} \quad (1.7)$$

See [2, 17, 18] for similar models. System of equations similar to (1.2) are also used in multiscale blood flow models, for example, in [5, 19].

Let us determine the equilibria of the above system when p_{f0} and p_f do not depend on t . Setting the derivative with respect to time to zero in (1.2), the first equation will give $\partial(Au)/\partial x = 0$ and so Au is constant on $[0, \ell]$. However, the third and fourth equation will give $A(t, 0)u(t, 0) = A(t, \ell)u(t, \ell) = 0$ and assuming that A remains positive for all $t \geq 0$ it follows that u must be identically zero on $[0, \ell]$. Using this information in the second equation we obtain that $\partial A/\partial x = 0$ and so A must be constant on the domain, say $A = A_e$. Because $dh_0/dt = 0$ and $dh/dt = 0$ then $h_0 = h_{0e}$ and $h = h_e$ for some constants h_{0e} and h_e . Thus we have

$$A_e = A_0 \left(1 + \frac{r_0}{sE} (\rho g h_{0e} + p_{f0}) \right)^2 = A_0 \left(1 + \frac{r_0}{sE} (\rho g h_e + p_f) \right)^2.$$

and it follows that $h_e - h_{0e} = \frac{1}{\rho g}(p_{f0} - p_f)$. We ignore the other possibility $h_{0e} + h_e = -\frac{1}{\rho g}(2sE + r_0 p_{f0} + r_0 p_f)$ since we are interested in the case where the level heights in the tanks are both positive. If $p_{f0} = p_f$ then the former equality coincides with the fact that the level heights in the two tanks must be the same. Note also that this is true even when the two tanks have different horizontal cross sections. If V denotes the volume of fluid in the tube and in the tanks, then $V = A_e \ell + A_T(h_{0e} + h_e)$. Therefore p_{f0}, p_f and V uniquely determine the equilibrium point. Furthermore, it is easy to see that we can choose p_{f0} and p_f such that h_{0e} and h_e are both positive.

To linearize the above system about the equilibrium point $z_e = (A_e, u_e, (A_e)_x, (u_e)_x, h_{0e}, h_e)$, where $u_e = (A_e)_x = (u_e)_x = 0$, we use the Taylor series expansions of the right hand sides of (1.2), (1.5), (1.6) and (1.7) about the equilibrium z_e and neglect the terms of order higher than one. From these equations we let $A = A_e + \tilde{A}$, $u = \tilde{u}$, $h_0 = h_{0e} + \tilde{h}_0$ and $h = h_e + \tilde{h}$, which are the small deviations from the equilibrium, to obtain the linearized system

$$\begin{cases} \frac{\partial \tilde{A}}{\partial t} = -A_e \frac{\partial \tilde{u}}{\partial x}, & t > 0, 0 < x < \ell, \\ \frac{\partial \tilde{u}}{\partial t} = -\alpha \frac{\partial \tilde{A}}{\partial x} - \beta \tilde{u}, & t > 0, 0 < x < \ell, \\ \frac{d\tilde{h}_0}{dt} = -\frac{A_e}{A_T} \tilde{u}(t, 0), & t > 0, \\ \frac{d\tilde{h}}{dt} = \frac{A_e}{A_T} \tilde{u}(t, \ell), & t > 0, \end{cases} \quad (1.8)$$

with boundary conditions

$$\tilde{A}(t, 0) = \gamma \tilde{h}_0(t), \quad \tilde{A}(t, \ell) = \gamma \tilde{h}(t), \quad t > 0, \quad (1.9)$$

and initial conditions

$$\begin{cases} \tilde{A}(0, x) = \tilde{A}^0(x), & \tilde{u}(0, x) = \tilde{u}^0(x), & 0 \leq x \leq \ell, \\ \tilde{h}_0(0) = \tilde{h}_0^0, & \tilde{h}(0) = \tilde{h}^0 \end{cases} \quad (1.10)$$

In the above system we used the following notations

$$\begin{aligned} \alpha &= \frac{sE}{2\rho r_0 \sqrt{A_0 A_e}}, & \beta &= \frac{8\pi\mu}{\rho A_0}, \\ \gamma &= \frac{2\rho A_0 g r_0}{sE} \left(1 + \frac{r_0}{sE}(\rho g h_{0e} + p_{f0})\right) = \frac{2\rho A_0 g r_0}{sE} \left(1 + \frac{r_0}{sE}(\rho g h_e + p_f)\right), \end{aligned}$$

since, for the linearization, we assume that p_{f0} and p_f are constants. We remark that all the parameters r_0, s, A_0, A_e, E are positive while μ is nonnegative. As a result, $\alpha > 0$ and $\beta \geq 0$. The constants p_{f0} and p_f can also be chosen to be small, so that $\gamma > 0$. The resulting linear system is the coupling of PDEs in one space dimension with ODEs and sometimes such systems are referred to as *hybrid systems*. By differentiation, a second order linear model, which is a wave equation with viscous damping and Robin boundary conditions, was formulated and discussed by Bredow [23].

In Section 2, we show that the operator corresponding to the abstract formulation of the linearized model generates a strongly continuous semigroup of contractions

on the whole state space. We show in Section 3 that under the presence of friction there are no eigenvalues of the operator on the imaginary axis other than the origin. The semigroup is then exponentially stable if it is restricted to the orthogonal complement of the eigenspace corresponding to the eigenvalue 0. This eigenspace can be viewed as a space of *equilibria* of the linearized model.

A boundary control system is considered in Section 4. For more details on boundary control systems, we refer to the book of Tucsnak and Weiss [22, Chapter 10] and the references therein. The main idea is to reformulate an abstract initial-boundary value problem as a pure initial-value problem in an extended space. We use the Riesz basis approach to prove the exact controllability of the system. To do this, we modify the arguments in [22, Proposition 8.1.3] which work in orthonormal bases. Unlike orthonormal bases, Riesz bases in general do not satisfy the property of being orthogonal. The Riesz basis approach has been successfully used by Guo and collaborators to prove the stability of certain beam equations [6, 7, 8, 9]. The basic idea of Riesz basis generation in these papers is the application of a result similar to Bari's Theorem [26, Theorem 15], i.e., to prove that a sequence of generalized eigenvectors is quadratically close to a given Riesz basis. Unlike beam equations, which have increasing spectral gap (distance between consecutive eigenvalues), wave equations have an asymptotically constant spectral gap. A refinement of the Riesz basis generation theorem of Guo [6, Theorem 6.3] was given recently by Xu and Weiss [25, Theorem 2.4]. The latter result will be used in proving that the infinitesimal generator is Riesz spectral, i.e., has a Riesz basis consisting of generalized eigenvectors. Furthermore, the uniform gap property of the spectrum also plays an important role for the application of Ingham's theorem, which is used in the proof of exact controllability.

A minimal time of controllability for single input controls will be given. However, Ingham's Theorem will not be applicable in this problem and we need to use other perturbation results in non-harmonic Fourier analysis. In order to solve this, we separate the lower and higher frequencies and replace the non-harmonic Fourier basis elements corresponding to the lower frequencies by some harmonic ones. With this in hand, the problem will be solved by applying a generalized Kadec's $\frac{1}{4}$ -Theorem (see e.g. [26, Corollary 2, p. 196]).

Finally, we will state an analogous result for distributed control which is done, e.g. in [18, 23, 2].

2. WELL-POSEDNESS OF THE LINEAR SYSTEM

In this section we prove the well-posedness of the linear system (1.8)–(1.10). For convenience, we will denote the state variables and the initial conditions for the linearized system without the tildas. Our approach utilizes the theory of strongly continuous semigroups. We will recast the system as a differential equation in an infinite-dimensional state space. Consider the Hilbert space $\mathcal{X} = L^2((0, \ell), \mathbb{C})^2 \times \mathbb{C}^2$ equipped with the inner product

$$\langle (\varphi_1, \psi_1, a_1, b_1), (\varphi_2, \psi_2, a_2, b_2) \rangle_{\mathcal{X}} = \frac{1}{A_e} \langle \varphi_1, \varphi_2 \rangle_{L^2} + \frac{1}{\alpha} \langle \psi_1, \psi_2 \rangle_{L^2} + \frac{\gamma A_T}{A_e} (a_1 \overline{a_2} + b_1 \overline{b_2}).$$

Notice that the norm induced by the above inner product is equivalent to the usual product norm of \mathcal{X} .

Define the linear operator $\mathcal{A} : \mathcal{D}(\mathcal{A}) \rightarrow \mathcal{X}$ with domain $\mathcal{D}(\mathcal{A}) = \{(A, u, h_0, h) \in \mathcal{X} : A, u \in H^1(0, \ell), A(0) = \gamma h_0, A(\ell) = \gamma h\}$ by

$$\mathcal{A} \begin{pmatrix} A \\ u \\ h_0 \\ h \end{pmatrix} = \begin{pmatrix} -A_e u_x \\ -\alpha A_x - \beta u \\ -\frac{A_e}{A_T} u(0) \\ \frac{A_e}{A_T} u(\ell) \end{pmatrix}.$$

Observe that the last two components of the state appear only in the domain of \mathcal{A} . The coupled system (1.8) can now be phrased as an abstract Cauchy problem

$$(\text{ACP}) \quad \begin{cases} \frac{d}{dt}(A, u, h_0, h)(t) &= \mathcal{A}(A, u, h_0, h)(t), & t > 0, \\ (A, u, h_0, h)(0) &= (A^0, u^0, h_0^0, h^0) \end{cases}$$

on the state space \mathcal{X} .

There are several ways to prove the well-posedness of (ACP). One possible approach is to split the PDE and the ODE. The PDE can be considered as a port-Hamiltonian system and hence it is well-posed [11, Chapter 13], and the ODE, being finite-dimensional, is also well-posed. Then one shows that the feedback interconnection of the two systems is well-posed [20, Section 7.2].

However, the approach presented here is based on the following lemma. It is a recap of the proof of Theorem 3 in [3]. X' denotes the dual space of X and $\mathcal{L}(X, Y)$ is the space of bounded linear operators from X to Y .

Lemma 2.1. *Let V and H be Hilbert spaces such that the embedding $V \subset H$ is compact and dense. Suppose that $a_1 : V \times V \rightarrow \mathbb{C}$ and $a_2 : H \times H \rightarrow \mathbb{C}$ are two bounded sesquilinear forms such that a_1 is V -coercive and $F : V \rightarrow \mathbb{C}$ is a continuous conjugate linear form. The equation*

$$a_1(u, v) + a_2(u, v) = F(v), \quad \forall v \in V, \quad (2.1)$$

has either a unique solution $u \in V$ for all $F \in V'$ or has a nontrivial solution for $F = 0$.

Proof. Since a_1 is bounded, the operator $T : V \rightarrow V'$ defined by $\langle T\varphi, \psi \rangle_{V' \times V} = a_1(\varphi, \psi)$ for all $\varphi, \psi \in V$ is bounded. Furthermore, by the Lax-Milgram Lemma we have $T^{-1} \in \mathcal{L}(V', V)$. Define $S : H \rightarrow V'$ by $\langle S\varphi, \psi \rangle_{V' \times V} = a_2(\varphi, \psi)$. Since for each $\varphi \in H$

$$\|S\varphi\|_{V'} = \sup_{\|\psi\|_V=1} |\langle S\varphi, \psi \rangle_{V' \times V}| \leq \sup_{\|\psi\|_V=1} C\|\varphi\|_H\|\psi\|_H \leq \tilde{C}\|\varphi\|_H$$

it holds that $S \in \mathcal{L}(H, V')$ and in particular $S \in \mathcal{L}(V, V')$ is compact. The equation (2.1) is equivalent to $(1 + T^{-1}S)v = T^{-1}F$ in V . Since $T^{-1}S$ is compact the Fredholm alternative implies that either $-1 \in \rho(T^{-1}S)$ or $-1 \in \sigma_p(T^{-1}S)$, where $\rho(A)$ and $\sigma_p(A)$ denote the resolvent set and point spectrum of a closed operator A . \square

Theorem 2.2. *The operator \mathcal{A} generates a strongly continuous semigroup of contractions on \mathcal{X} , and in particular, for every $(A^0, u^0, h_0^0, h^0) \in \mathcal{D}(\mathcal{A})$ there exist unique functions $A, u \in C^1([0, \infty), L^2(0, \ell))$ and $h_0, h \in C^1[0, \infty)$ such that (ACP) is satisfied.*

Proof. We will use the Lumer-Phillips Theorem in reflexive Banach spaces (see e.g. [4, Corollary III.3.20]). Integrating by parts and using the boundary conditions we have

$$\langle \mathcal{A}(A, u, h_0, h), (A, u, h_0, h) \rangle_{\mathcal{X}} = -\frac{\beta}{\alpha} \|u\|_{L^2}^2 + 2i\Im \langle u, A_x \rangle_{L^2}$$

for all $(A, u, h_0, h) \in \mathcal{D}(\mathcal{A})$. Taking the real part shows that \mathcal{A} is dissipative. Next we are going to show the range condition. Fix $\lambda > 0$ and $(B, v, g_0, g) \in \mathcal{X}$ and define $a_1 : H^1(0, \ell) \times H^1(0, \ell) \rightarrow \mathbb{C}$, $a_2 : L^2(0, \ell) \times L^2(0, \ell) \rightarrow \mathbb{C}$ and $F : H^1(0, \ell) \rightarrow \mathbb{C}$ by

$$\begin{aligned} a_1(\varphi, \psi) &= \frac{\alpha\gamma A_e}{A_T(\lambda + \beta)} \langle \varphi, \psi \rangle_{H^1} + \lambda\varphi(0)\overline{\psi(0)} + \lambda\varphi(\ell)\overline{\psi(\ell)} \\ a_2(\varphi, \psi) &= \frac{\gamma}{A_T} \left(\lambda - \frac{\alpha A_e}{\lambda + \beta} \right) \langle \varphi, \psi \rangle_{L^2} \\ F(\psi) &= \frac{\gamma}{A_T} \int_0^\ell B(x)\overline{\psi(x)} dx + \frac{\gamma A_e}{A_T(\lambda + \beta)} \int_0^\ell v(x)\overline{\psi_x(x)} dx + \gamma g_0\overline{\psi(0)} + \gamma g\overline{\psi(\ell)}, \end{aligned}$$

respectively. Note that the sesquilinear forms a_1, a_2 and the conjugate linear form F satisfy the conditions of Lemma 2.1. It can be shown (see the Appendix for details) that the equation

$$(\lambda I - \mathcal{A})(A, u, h_0, h) = (B, v, g_0, g) \quad (2.2)$$

has a solution $(A, u, h_0, h) \in \mathcal{D}(\mathcal{A})$ if and only if there is an $A \in H^1(0, \ell)$ that satisfies

$$a_1(A, \psi) + a_2(A, \psi) = F(\psi), \quad \forall \psi \in H^1(0, \ell) \quad (2.3)$$

We prove that the second case in Lemma 2.1 does not hold. Suppose that $a_1(A, \psi) + a_2(A, \psi) = 0$ for all $\psi \in H^1(0, \ell)$. This condition is equivalent to the system (2.2) with $(B, v, g_0, g) = 0$. From the first equation we get $A = -\frac{A_e}{\lambda} u_x$. The rest of the equations will give us

$$\begin{aligned} \langle A, A \rangle_{L^2} &= -\frac{A_e}{\lambda} \int_0^\ell u_x(x)\overline{A(x)} dx \\ &= -\frac{A_e}{\lambda} (u(\ell)\overline{A(\ell)} - u(0)\overline{A(0)}) + \frac{A_e}{\lambda} \int_0^\ell u(x)\overline{A_x(x)} dx \\ &= -\frac{A_T}{\gamma} (|A(\ell)|^2 + |A(0)|^2) - \frac{\alpha A_e}{\lambda(\lambda + \beta)} \int_0^\ell |A_x(x)|^2 dx \leq 0. \end{aligned}$$

Hence $A = 0$. This proves the range condition and hence completes the proof of the theorem. \square

Remark 2.3. *If the initial data $A^0, u^0 \in H^2(0, \ell)$ and $h_0^0, h_0 \in \mathbb{C}$ satisfy the compatibility conditions $A^0(0) = \gamma h_0^0$, $A(\ell) = \gamma h^0$, $A_T u_x^0(0) = \gamma u^0(0)$ and $-A_T u_x^0(\ell) = \gamma u^0(\ell)$ then we have a classical solution $A, u \in C^1([0, \infty) \times [0, \ell])$ and $h_0, h \in C^2[0, \infty)$.*

3. SPECTRAL PROPERTIES AND UNIFORM EXPONENTIAL STABILITY

At this point, we already know that $\sigma(\mathcal{A}) \subset \{z \in \mathbb{C} : \Re z \leq 0\}$ since \mathcal{A} generates a contractive \mathcal{C}_0 -semigroup on \mathcal{X} . Furthermore, the adjoint operator \mathcal{A}^* also generates a contraction \mathcal{C}_0 -semigroup, which is the adjoint semigroup, in other words, $(e^{\mathcal{A}t})^* = e^{\mathcal{A}^*t}$ for all $t \geq 0$.

Let us determine the \mathcal{X} -adjoint of \mathcal{A} . Define $\tilde{\mathcal{A}} : \mathcal{D}(\mathcal{A}) \rightarrow \mathcal{X}$ by

$$\tilde{\mathcal{A}} \begin{pmatrix} B \\ v \\ g_0 \\ g \end{pmatrix} = \begin{pmatrix} A_e v_x \\ \alpha B_x - \beta v \\ \frac{A_e}{A_T} v(0) \\ -\frac{A_e}{A_T} v(\ell) \end{pmatrix}.$$

For each $(A, u, h_0, h), (B, v, g_0, g) \in \mathcal{D}(\mathcal{A})$, a straight forward computation yields

$$\langle \mathcal{A}(A, u, h_0, h), (B, v, g_0, g) \rangle_{\mathcal{X}} = \langle (A, u, h_0, h), \tilde{\mathcal{A}}(B, v, g_0, g) \rangle_{\mathcal{X}}$$

which implies that $(B, v, g_0, g) \in \mathcal{D}(\mathcal{A}^*)$, and this proves that \mathcal{A}^* is an extension of $\tilde{\mathcal{A}}$. Using a similar argument as in the proof of Theorem 2.2, we can also show that $\tilde{\mathcal{A}}$ generates a \mathcal{C}_0 -semigroup of contractions on \mathcal{X} , and hence $(0, \infty) \subset \rho(\mathcal{A}^*) \cap \rho(\tilde{\mathcal{A}})$. Applying [16, Lemma 1.6.14], we can see that $\mathcal{A}^* = \tilde{\mathcal{A}}$ and in particular $\mathcal{D}(\mathcal{A}^*) = \mathcal{D}(\tilde{\mathcal{A}}) = \mathcal{D}(\mathcal{A})$.

In the absence of friction, i.e. $\beta = 0$, we have $\mathcal{A}^* = -\mathcal{A}$ and so \mathcal{A} is skew-adjoint and from Stone's Theorem (see e.g. [4, Theorem 3.24]) the operator \mathcal{A} generates a unitary \mathcal{C}_0 -group. This will be used in the succeeding section. The operator \mathcal{A} and \mathcal{A}^* also generate \mathcal{C}_0 -groups even for $\beta > 0$. To see this, let us define $\mathcal{C} \in \mathcal{L}(\mathcal{X})$ by $\mathcal{C}(A, u, h_0, h) = (0, u, 0, 0)$. Then $-\mathcal{A} = \mathcal{A}^* + 2\beta\mathcal{C}$ and $-\mathcal{A}$ generates a \mathcal{C}_0 -semigroup satisfying $\|e^{-\mathcal{A}t}\| \leq e^{2\beta t}$ for all $t \geq 0$ (see, e.g. [4, Theorem III.1.3]). From Theorem 2.2 and [4, p. 79], \mathcal{A} generates a \mathcal{C}_0 -group on \mathcal{X} satisfying $\|e^{\mathcal{A}t}\| \leq e^{2\beta|t|}$ for all $t \in \mathbb{R}$. The case of \mathcal{A}^* is analogous. Tight decay rates will be given after we have described the spectra of the generators.

The operators \mathcal{A} and \mathcal{A}^* have compact resolvents and therefore their spectra consist of eigenvalues only. This is a consequence of the compactness of the embedding $H^1(0, \ell) \hookrightarrow L^2(0, \ell)$. We can now characterize the spectrum of \mathcal{A} and its adjoint. Due to the differential boundary conditions, namely the third and fourth lines in (1.8), the eigenvalues appear on the boundary conditions of a two-point boundary value problem, see (3.5) for instance. To describe the spectrum of the differential operator for $\beta \geq 0$, we first describe the special case where $\beta = 0$ and use this to investigate for the case $\beta > 0$. First, we state a lemma needed for the asymptotic description of the eigenvalues.

Lemma 3.1. *Let $a, b, c > 0$ and $H(x) = x \cos ax - (bx^2 - c) \sin ax$ and let $(\mu_n)_{n \in \mathbb{N}}$, listed in strictly increasing order, be the positive zeros of H . Then $\mu_n = \frac{(n-1)\pi}{a} + \mathcal{O}(n^{-1})$ as $n \rightarrow \infty$.*

Proof. Define $H_1(x) = \tan ax$ and $H_2(x) = x/(bx^2 - c)$. If $(2n+1)\pi/2a = \sqrt{c}/\sqrt{b}$ for some $n \geq 0$ then $\pm\sqrt{c}/\sqrt{b}$ are zeros of H . The other zeros of H are precisely the abscissas of the points of intersection of the graphs of H_1 and H_2 . If $(2n+1)\pi/2a \neq$

\sqrt{c}/\sqrt{b} for all $n \geq 0$ then the zeros of H are just the abscissas of the intersection of H_1 and H_2 . By looking at the graphs of H_1 and H_2 it can be seen that for large indices n , we have $\mu_n = (n-1)\pi/a + e_n$ where $e_n \rightarrow 0$. Multiplying by a and taking the sine of both sides yields

$$\sin ae_n = (-1)^{n-1} \frac{\mu_n \cos a\mu_n}{b\mu_n^2 - c} = (-1)^{n-1} \frac{((n-1)\pi/a + \mathcal{O}(1)) \cos a\mu_n}{b((n-1)\pi/a + \mathcal{O}(1))^2 - c}, \quad n \rightarrow \infty.$$

Taking the inverse sine and noting that $\sin^{-1} x = \mathcal{O}(x)$ as $x \rightarrow 0$ we obtain that $e_n = \mathcal{O}(n^{-1})$. \square

Theorem 3.2. *Let $(\mu_n)_{n \in \mathbb{Z}}$, listed in strictly increasing order, be the real solutions of the equation,*

$$\frac{2A_T}{\gamma A_e} \mu \cos \frac{\mu \ell}{\sqrt{\alpha A_e}} - \frac{\sqrt{A_e}}{\sqrt{\alpha}} \left(\frac{A_T^2}{\gamma^2 A_e^2} \mu^2 - \frac{\alpha}{A_e} \right) \sin \frac{\mu \ell}{\sqrt{\alpha A_e}} = 0, \quad (3.1)$$

where $\mu_0 = 0$ and $\mu_{-n} = -\mu_n$. Then the spectrum of \mathcal{A} is given by $\sigma(\mathcal{A}) = (\lambda_n)_{n \in \mathbb{Z}}$, where

$$\lambda_n = -\frac{\beta}{2} + \frac{1}{2} \operatorname{sgn}(n) \sqrt{\beta^2 - 4\mu_n^2}, \quad n \in \mathbb{Z}^* := \mathbb{Z} \setminus \{0\}, \quad (3.2)$$

and $\lambda_0 = 0$, and the eigenvalues λ_n satisfy the asymptotic growth

$$\lambda_n = -\frac{\beta}{2} + \left(\frac{\sqrt{\alpha A_e}(n-1)\pi}{\ell} + \mathcal{O}(n^{-1}) \right) i, \quad n \rightarrow \infty. \quad (3.3)$$

In particular, $\sigma(\mathcal{A}) = \sigma(\mathcal{A}^*)$. An eigenvector z_n of \mathcal{A} associated with the eigenvalue λ_n is given by

$$z_n = \begin{pmatrix} \varphi_n \\ \psi_n \\ \eta_{0n} \\ \eta_n \end{pmatrix} = \begin{pmatrix} \cos \frac{\mu_n x}{\sqrt{\alpha A_e}} - \frac{A_T \mu_n}{\gamma \sqrt{\alpha A_e}} \sin \frac{\mu_n x}{\sqrt{\alpha A_e}} \\ - \left(\frac{A_T \lambda_n}{\gamma A_e} \cos \frac{\mu_n x}{\sqrt{\alpha A_e}} + \frac{\sqrt{\alpha} \lambda_n}{\sqrt{A_e} \mu_n} \sin \frac{\mu_n x}{\sqrt{\alpha A_e}} \right) \\ \frac{1}{\gamma} \\ \frac{1}{\gamma} \left(\cos \frac{\mu_n \ell}{\sqrt{\alpha A_e}} - \frac{A_T \mu_n}{\gamma \sqrt{\alpha A_e}} \sin \frac{\mu_n \ell}{\sqrt{\alpha A_e}} \right) \end{pmatrix}, \quad n \in \mathbb{Z}. \quad (3.4)$$

Similarly, an eigenvector z_n^* of \mathcal{A}^* associated to the eigenvalue λ_n is given by $z_n^* = (\varphi_n, -\psi_n, \eta_{0n}, \eta_n)$ for every $n \in \mathbb{Z}$.

Proof. Note that $\lambda \in \sigma(\mathcal{A})$ if and only if there exists $(A, u, h_0, h) \in \mathcal{D}(\mathcal{A}) \setminus \{0\}$ satisfying the boundary value problem

$$\begin{cases} \frac{\partial}{\partial x} \begin{pmatrix} A \\ u \end{pmatrix} = \begin{pmatrix} 0 & -\frac{\lambda+\beta}{\alpha} \\ -\frac{\lambda}{A_e} & 0 \end{pmatrix} \begin{pmatrix} A \\ u \end{pmatrix} \\ -\frac{A_e}{A_T} u(0) = \frac{\lambda}{\gamma} A(0), \quad \frac{A_e}{A_T} u(\ell) = \frac{\lambda}{\gamma} A(\ell) \end{cases} \quad (3.5)$$

Consider the equation $\mathcal{A}(A, u, h_0, h) = 0$ where $(A, u, h_0, h) \in \mathcal{D}(\mathcal{A})$. Then we have $u = 0$ and A is constant. Since $A(0) = \gamma h_0$ and $A(\ell) = \gamma h$ we have $h_0 = h$ and

so $(A, u, h_0, h) = c(\gamma, 0, 1, 1)$ for some $c \in \mathbb{C}$. Hence $0 \in \sigma(\mathcal{A})$. One can check that $-\beta \in \sigma(\mathcal{A})$ with $\beta > 0$ if and only if $\ell = -2A_T/\gamma$, hence we exclude this case under the physically relevant assumption $\ell > 0$.

Suppose that $\lambda \neq 0$ and $\lambda \neq -\beta$. By diagonalizing the 2×2 matrix in (3.5) we can obtain that the solution of the ODE is given by

$$A(x) = c_1 \cosh \frac{\sqrt{\lambda(\lambda+\beta)}x}{\sqrt{\alpha A_e}} - c_2 \frac{\sqrt{A_e}}{\sqrt{\alpha}} \frac{\sqrt{\lambda(\lambda+\beta)}}{\lambda} \sinh \frac{\sqrt{\lambda(\lambda+\beta)}x}{\sqrt{\alpha A_e}} \quad (3.6)$$

$$u(x) = -c_1 \frac{\sqrt{\alpha}}{\sqrt{A_e}} \frac{\lambda}{\sqrt{\lambda(\lambda+\beta)}} \sinh \frac{\sqrt{\lambda(\lambda+\beta)}x}{\sqrt{\alpha A_e}} + c_2 \cosh \frac{\sqrt{\lambda(\lambda+\beta)}x}{\sqrt{\alpha A_e}} \quad (3.7)$$

for some $(c_1, c_2) \in \mathbb{C}^2$, where the square root denotes any fixed branch of the complex square root; for definiteness we choose the principal branch where the nonpositive real axis is the chosen branch cut.

This and the boundary conditions yield the following homogeneous system of equations

$$\begin{aligned} & - \left(\frac{A_T \lambda}{A_e \gamma} \cosh \frac{\sqrt{\lambda(\lambda+\beta)}\ell}{\sqrt{\alpha A_e}} + \frac{\sqrt{\alpha}}{\sqrt{A_e}} \frac{\lambda}{\sqrt{\lambda(\lambda+\beta)}} \sinh \frac{\sqrt{\lambda(\lambda+\beta)}\ell}{\sqrt{\alpha A_e}} \right) c_1 \\ & + \left(\cosh \frac{\sqrt{\lambda(\lambda+\beta)}\ell}{\sqrt{\alpha A_e}} + \frac{A_T}{A_e \gamma} \frac{\sqrt{A_e}}{\sqrt{\alpha}} \sqrt{\lambda(\lambda+\beta)} \sinh \frac{\sqrt{\lambda(\lambda+\beta)}\ell}{\sqrt{\alpha A_e}} \right) c_2 = 0 \\ & \frac{A_T \lambda}{A_e \gamma} c_1 + c_2 = 0 \end{aligned}$$

The above system in the unknowns c_1 and c_2 has a nontrivial solution if and only if the determinant of the corresponding matrix is zero and this is equivalent to the equation

$$F(w) := \frac{2A_T}{A_e \gamma} w \cosh \frac{w\ell}{\sqrt{\alpha A_e}} + \frac{\sqrt{A_e}}{\sqrt{\alpha}} \left(\frac{A_T^2}{A_e^2 \gamma^2} w^2 + \frac{\alpha}{A_e} \right) \sinh \frac{w\ell}{\sqrt{\alpha A_e}} = 0, \quad (3.8)$$

where we put $w = \sqrt{\lambda(\lambda+\beta)}$.

Let us consider the special case where $\beta = 0$. In this case, $\lambda \in \sigma(\mathcal{A})$ if and only if $F(\lambda) = 0$. However, since \mathcal{A} is skew-adjoint, its spectrum must lie on the imaginary axis. This implies that all zeros of F are purely imaginary. Letting $\lambda = i\mu$, where $\mu \in \mathbb{R}$, we can see that $F(i\mu) = 0$ is equivalent to the equation (3.1). Using this for the case $\beta \geq 0$, we can see from (3.8) that $\lambda \in \sigma(\mathcal{A})$ if and only if $\sqrt{\lambda(\lambda+\beta)} = i\mu$ for some $\mu \in \mathbb{R}$ that satisfies (3.1). The asymptotic behavior (3.3) of the eigenvalues follows from the asymptotic behavior of the solutions of (3.1) given by the previous lemma

$$\mu_n = \frac{\sqrt{\alpha A_e}(n-1)\pi}{\ell} + \mathcal{O}(n^{-1}), \quad n \rightarrow \infty. \quad (3.9)$$

The fact that the spectra of \mathcal{A} and \mathcal{A}^* coincide comes from the symmetry of the spectrum of \mathcal{A} with respect to the real axis.

Choosing $c_1 = 1$ and $c_2 = -\frac{A_T \lambda_n}{\gamma A_e}$ in (3.6) and (3.7) gives the first and second components of the eigenvector z_n . The third and fourth components are due to

the boundary conditions $\eta_{0n} = \frac{1}{\gamma}\varphi_n(0)$ and $\eta_n = \frac{1}{\gamma}\varphi_n(\ell)$. Finally, since z_n is an eigenvector of \mathcal{A} corresponding to λ_n we have

$$(\lambda_n I - \mathcal{A}^*)z_n^* = \begin{pmatrix} \lambda_n \varphi_n + A_e(\psi_n)_x \\ -\lambda_n \psi_n - \alpha(\varphi_n)_x - \beta \psi_n \\ \lambda_n \eta_{0n} + \frac{A_e}{A_T} \psi_n(0) \\ \lambda_n \eta_n - \frac{A_e}{A_T} \psi_n(\ell) \end{pmatrix} = \begin{pmatrix} 0 \\ 0 \\ 0 \\ 0 \end{pmatrix},$$

and so z_n^* is an eigenvector of \mathcal{A}^* corresponding to the eigenvalue λ_n . \square

If $\beta > 2\mu_n$, then the eigenvalue λ_n is real and negative. This implies that $z(t, x) = (e^{At})z_n(x) = e^{\lambda_n t} z_n(x)$ monotonically decays to zero as time goes to infinity. This means that when the fluid inside the tube and tanks is sufficiently viscous, then there are solutions which decay to the equilibrium state without oscillations.

With or without viscosity, we have seen in Theorem 3.2 that $0 \in \sigma(\mathcal{A})$ and this means that the system is not stable in \mathcal{X} . The eigenspace associated with the eigenvalue 0 is the one-dimensional subspace $\mathcal{X}_0 := \{c(\gamma, 0, 1, 1) : c \in \mathbb{C}\}$. Moreover, $\mathcal{N}(\mathcal{A}^*) = \mathcal{X}_0$ and so \mathcal{A} and its adjoint have the same kernel. The state $(A_e, 0, h_{0e}, h_e) + c(\gamma, 0, 1, 1)$ for $c \neq 0$ is also an equilibrium of the nonlinear system but corresponds to different parameters V , p_{f0} and p_f .

It is easy to check that the space \mathcal{X}_0 is invariant under the action of the group $(e^{At})_{t \in \mathbb{R}}$ and its adjoint group. If $z \in \mathcal{X}_0^\perp$ and $w \in \mathcal{X}_0$ then $\langle e^{At}z, w \rangle_{\mathcal{X}} = \langle z, e^{A^*t}w \rangle_{\mathcal{X}} = 0$ by the invariance of \mathcal{X}_0 under $(e^{A^*t})_{t \in \mathbb{R}}$. Hence \mathcal{X}_0^\perp is invariant under $(e^{At})_{t \in \mathbb{R}}$, i.e., $e^{At}\mathcal{X}_0^\perp \subset \mathcal{X}_0^\perp$ for all $t \in \mathbb{R}$. From [22, Proposition 2.4.3] the restricted group $(e^{At}|_{\mathcal{X}_0^\perp})_{t \in \mathbb{R}}$ is a \mathcal{C}_0 -group on \mathcal{X}_0^\perp whose generator is given by the part of \mathcal{A} in \mathcal{X}_0^\perp , denoted by \mathcal{A}_p . A similar argument shows that $e^{A^*t}|_{\mathcal{X}_0^\perp} = e^{\mathcal{A}_p^*t}$ for all $t \in \mathbb{R}$ where \mathcal{A}_p^* is the part of \mathcal{A}^* in \mathcal{X}_0^\perp . It is easily seen that $\mathcal{A}_p^* = (\mathcal{A}_p)^*$, which means that taking the part in a closed invariant subspace and taking the adjoint commute. Since \mathcal{A}_p and \mathcal{A}_p^* also have compact resolvents we have $\sigma(\mathcal{A}_p) = \sigma(\mathcal{A}_p^*) = \sigma(\mathcal{A}) \setminus \{0\}$, $\rho(\mathcal{A}_p) = \rho(\mathcal{A}_p^*) = \rho(\mathcal{A}) \cup \{0\}$. The semigroup generated by \mathcal{A}_p will be used in the next section.

Let us characterize the nonzero eigenvalues of \mathcal{A} as the viscosity β increases. In the following discussions the equality (3.2) is used. If $\beta \in [0, 2\mu_1)$ then all the nonzero eigenvalues have nonzero imaginary parts and $|\lambda_n| = |\mu_n|$ for all $n \in \mathbb{Z}$. Therefore as β increases on this interval, the eigenvalues are rotated positively (that is, counterclockwise) around the origin and all the eigenvalues lie on the line $\Re z = -\beta/2$. If $\beta = 2\mu_1$ then the two eigenvalues $\lambda_{\pm 1}$ coincide and both are equal to $-\beta/2$. Suppose that $\beta \in [2\mu_1, 2\mu_2)$. As β increases in this interval, λ_n for $|n| > 2$ is again rotated in the same manner as before. However, the eigenvalue λ_1 now goes to the right along the real axis while λ_{-1} goes to the left along the real axis, faster than $\Re \lambda_{\pm 2}$. When $\beta = 2\mu_2$, the eigenvalues $\lambda_{\pm 2}$ coincide while λ_{-1} is on the left of $\lambda_{\pm 2}$. The same behavior holds for the other intervals $[2\mu_n, 2\mu_{n+1})$, $n \geq 2$. Thus the larger β , the more eigenvalues there are on the interval $(-\beta/2, 0)$ and there are eigenfunctions which decay slower than those for smaller β . The eigenvalues that move to the right approach 0 as β increases.

If we denote by ζ_n the eigenvector of \mathcal{A} corresponding to $\lambda_n = i\mu_n$ when $\beta = 0$ and by z_n the eigenvector of \mathcal{A} when $\beta > 0$ then for all n such that $\beta < 2|\mu_n|$ we

have $|\lambda_n| = |\mu_n|$,

$$\|z_n\|_{\mathcal{X}} = \|z_n^*\|_{\mathcal{X}} = \|\zeta_n\|_{\mathcal{X}} = \|\zeta_{-n}\|_{\mathcal{X}}, \quad (3.10)$$

and a straightforward calculation gives

$$\|\zeta_n\|_{\mathcal{X}}^2 = \frac{A_T^2 \ell \mu_n^2}{\gamma^2 \alpha A_e^2} + \frac{\ell}{A_e} + \frac{A_T}{\gamma A_e} + \frac{A_T}{\gamma A_e} \left(\cos \frac{\mu_n \ell}{\sqrt{\alpha A_e}} - \frac{A_T \mu_n}{\gamma \sqrt{\alpha A_e}} \sin \frac{\mu_n \ell}{\sqrt{\alpha A_e}} \right)^2. \quad (3.11)$$

Theorem 3.3. *Let $\beta \geq 0$. Then we have the following:*

- (1) *If $\beta \neq 2\mu_n$ for all $n \in \mathbb{N}$ then the normalized eigenvectors $(z_n/\|z_n\|_{\mathcal{X}})_{n \in \mathbb{Z}}$ of \mathcal{A} form a Riesz basis for \mathcal{X} . If $\beta = 0$ then this Riesz basis is in fact an orthonormal basis.*
- (2) *If $\beta = 2\mu_n$ for some $n \in \mathbb{N}$ then the sequence $(z_n/\|z_n\|_{\mathcal{X}})_{n \in \mathbb{Z} \setminus \{-n\}} \cup \{Z/\|Z\|_{\mathcal{X}}\}$, where*

$$Z = (0, -\lambda_n^{-1} \psi_n, 0, 0)^\top$$

is a generalized eigenvector of \mathcal{A} corresponding to λ_n satisfying $(\lambda_n I - \mathcal{A})Z = z_n$, forms a Riesz basis for \mathcal{X} .

Similar results for the generator \mathcal{A}^ hold, however, in (2) the vector Z should be replaced by the generalized eigenvector $Z^* := -Z$ of \mathcal{A}^* corresponding to λ_n .*

Proof. First consider the case where $\beta = 0$. Applying [1, Proposition III.6.1] to the operator \mathcal{A}_p , the normalized eigenvectors $(z_n/\|z_n\|_{\mathcal{X}})_{n \in \mathbb{Z}^*}$ forms an orthonormal basis for \mathcal{X}_0^\perp . Therefore combined with the normalized eigenvector associated with the eigenvalue 0, the sequence $(z_n/\|z_n\|_{\mathcal{X}})_{n \in \mathbb{Z}}$ form an orthonormal basis for $\mathcal{X} = \mathcal{X}_0 \oplus \mathcal{X}_0^\perp$. Now suppose that $\beta > 0$ and $\beta \neq 2\mu_n$ for all $n \in \mathbb{N}$. Again, let ζ_n be the eigenvector of \mathcal{A} corresponding to the eigenvalue $\lambda_n = i\mu_n$ for the case where there is no viscosity, i.e., $\beta = 0$. The first part of (1) follows from [25, Theorem 2.4] once we have shown that $(z_n/\|z_n\|_{\mathcal{X}})_{n \in \mathbb{Z}}$ and $(\zeta_n/\|\zeta_n\|_{\mathcal{X}})_{n \in \mathbb{Z}}$ are quadratically close in the sense that

$$\sum_{n \in \mathbb{Z}} \left\| \frac{z_n}{\|z_n\|_{\mathcal{X}}} - \frac{\zeta_n}{\|\zeta_n\|_{\mathcal{X}}} \right\|_{\mathcal{X}}^2 < \infty. \quad (3.12)$$

Let N be the largest integer such that $\beta > 2\mu_N$. From (3.4) and (3.10)

$$\frac{z_n}{\|z_n\|_{\mathcal{X}}} - \frac{\zeta_n}{\|\zeta_n\|_{\mathcal{X}}} = \left(0, \frac{\lambda_n - i\mu_n}{i\mu_n} \frac{\zeta_{n2}}{\|\zeta_n\|_{\mathcal{X}}}, 0, 0 \right), \quad |n| > N. \quad (3.13)$$

where ζ_{n2} is the second component of ζ_n . It can be seen from (3.2) that $|\lambda_n - i\mu_n| \rightarrow \beta/2$ as $|n| \rightarrow \infty$ and in particular the sequence $(\lambda_n - i\mu_n)_{n \in \mathbb{Z}}$ is bounded. Because $\|\zeta_{n2}\|_{L^2(0,\ell)} \leq \sqrt{\alpha} \|\zeta_n\|_{\mathcal{X}}$ it follows from (3.13) that

$$\sum_{|n| > N} \left\| \frac{z_n}{\|z_n\|_{\mathcal{X}}} - \frac{\zeta_n}{\|\zeta_n\|_{\mathcal{X}}} \right\|_{\mathcal{X}}^2 \leq \sum_{|n| > N} \frac{C}{\mu_n^2}$$

for some constant $C > 0$. The last sum is finite because of (3.9). As a consequence, (3.12) is satisfied.

Finally, consider the case where $\beta = 2\mu_n$ for some $n \in \mathbb{N}$. Let us verify that Z satisfies $(\lambda_n I - \mathcal{A})Z = z_n$. Indeed,

$$(\lambda_n I - \mathcal{A})Z - z_n = \begin{pmatrix} A_e(-\lambda_n^{-1}\psi_n)_x - \varphi_n \\ \lambda_n(-\lambda_n^{-1}\psi) - \beta\lambda_n^{-1}\psi_n - \psi_n \\ \frac{A_e}{A_T}(-\lambda_n^{-1}\psi_n)(0) - \eta_0 \\ -\frac{A_e}{A_T}(-\lambda_n^{-1}\psi_n)(\ell) - \eta_n \end{pmatrix} = \begin{pmatrix} -\lambda_n^{-1}(\lambda_n\varphi_n + A_e(\psi_n)_x) \\ -\psi_n + 2\psi_n - \psi_n \\ -\lambda_n^{-1}(\lambda_n\eta_{0n} + \frac{A_e}{A_T}\psi_n(0)) \\ -\lambda_n^{-1}(\lambda_n\eta_n - \frac{A_e}{A_T}\psi_n(\ell)) \end{pmatrix}$$

and this is zero because z_n is an eigenvector of \mathcal{A} corresponding to $\lambda_n = -\beta/2$. The same argument as in the previous case shows that the sequences $(z_n/\|z_n\|_{\mathcal{X}})_{n \in \mathbb{Z} \setminus \{-n\}} \cup \{Z/\|Z\|_{\mathcal{X}}\}$ and $(\zeta_n/\|\zeta_n\|_{\mathcal{X}})_{n \in \mathbb{Z}}$ are quadratically close and hence part (2) also follows from the Riesz basis generation result in [25, Theorem 2.4]. \square

Let $(\tilde{z}_n)_{n \in \mathbb{Z}}$ be the sequence biorthogonal to the Riesz basis $(z_n^*/\|z_n^*\|_{\mathcal{X}})_{n \in \mathbb{Z}}$ if $\beta \neq 2\mu_n$ for all $n \in \mathbb{N}$ or to the Riesz basis $(z_n^*/\|z_n^*\|_{\mathcal{X}})_{n \in \mathbb{Z} \setminus \{-n\}} \cup \{Z^*/\|Z^*\|_{\mathcal{X}}\}$ if $\beta = 2\mu_n$ for some $n \in \mathbb{N}$. The result we have just proved implies that every $z \in \mathcal{X}$ can be expressed uniquely as a Fourier series

$$z = \sum_{n \in \mathbb{Z}} \langle z, \tilde{z}_n \rangle_{\mathcal{X}} \frac{z_n^*}{\|z_n^*\|_{\mathcal{X}}}, \quad (3.14)$$

whenever $\beta \neq 2\mu_n$ for all $n \in \mathbb{N}$ and a similar equation holds for the other case. For all square-summable sequences $(a_n)_{n \in \mathbb{Z}}$ we have

$$c \left(\sum_{n \in \mathbb{Z}} |a_n|^2 \right)^{1/2} \leq \left\| \sum_{n \in \mathbb{Z}} \frac{a_n z_n^*}{\|z_n^*\|_{\mathcal{X}}} \right\|_{\mathcal{X}} \leq C \left(\sum_{n \in \mathbb{Z}} |a_n|^2 \right)^{1/2} \quad (3.15)$$

for some $c, C > 0$ independent of $(a_n)_{n \in \mathbb{Z}}$. Furthermore, the sequence $(\langle z, \tilde{z}_n \rangle_{\mathcal{X}})_{n \in \mathbb{Z}^*}$ is square-summable for each $z \in \mathcal{X}$. Since $e^{\mathcal{A}^* t} z_n^* = e^{\lambda_n t} z_n^*$ for all $n \in \mathbb{Z}$ it follows from (3.14) and the continuity of $e^{\mathcal{A}^* t}$ that when $\beta \neq 2\mu_n$ for all $n \in \mathbb{N}$ the group generated by \mathcal{A}^* can be written as

$$e^{\mathcal{A}^* t} z = \sum_{n \in \mathbb{Z}^*} e^{\lambda_n t} \langle z, \tilde{z}_n \rangle_{\mathcal{X}} \frac{z_n^*}{\|z_n^*\|_{\mathcal{X}}} \quad (3.16)$$

for every $z \in \mathcal{X}$ and $t \in \mathbb{R}$. If $\beta = 2\mu_n$ for some $n \in \mathbb{N}$ then the group is given by

$$e^{\mathcal{A}^* t} z = \langle z, \tilde{z}_{-n} \rangle (e^{\lambda_n t} Z^* - t e^{\lambda_n t} z_n^*) + \sum_{n \in \mathbb{Z} \setminus \{-n\}} e^{\lambda_n t} \langle z, \tilde{z}_n \rangle_{\mathcal{X}} \frac{z_n^*}{\|z_n^*\|_{\mathcal{X}}} \quad (3.17)$$

for every $z \in \mathcal{X}$ and $t \in \mathbb{R}$. Similar characterizations for the group generated by \mathcal{A} hold. The reason why we choose to expand the adjoint semigroup is that we will use a duality argument in the proof of Theorem 4.3. Now we have the following stability result.

Theorem 3.4. *Let $\beta > 0$. The \mathcal{C}_0 -semigroups $(e^{\mathcal{A}_p t})_{t \geq 0}$ and $(e^{\mathcal{A}_p^* t})_{t \geq 0}$ generated by \mathcal{A}_p and \mathcal{A}_p^* are uniformly exponentially stable, i.e., there exist constants $M \geq 1$ and $\omega > 0$ such that*

$$\|e^{\mathcal{A}_p t}\|_{\mathcal{L}(\mathcal{X}_0^\perp)} = \|e^{\mathcal{A}_p^* t}\|_{\mathcal{L}(\mathcal{X}_0^\perp)} \leq M e^{-\omega t}, \quad t \geq 0. \quad (3.18)$$

Furthermore, $\omega(\mathcal{A}_p) = s(\mathcal{A}_p)$ where $s(\mathcal{A}_p)$ is the spectral bound of \mathcal{A}_p and $\omega(\mathcal{A}_p)$ is the growth bound of the semigroup generated by \mathcal{A}_p . For every $z_0 \in \mathcal{X}$, if $z = e^{\mathcal{A}t}z_0 \in C([0, \infty), \mathcal{X})$ is the mild solution of (ACP) corresponding to the initial data z_0 then $\|z(t) - Pz_0\|_{\mathcal{X}} \leq M\|z_0\|_{\mathcal{X}}e^{-\omega t}$ for all $t \geq 0$, where P is the orthogonal projection of \mathcal{X} onto \mathcal{X}_0 .

Proof. The first and second parts follow immediately from (3.16) and (3.17). For the last part, let Q be the orthogonal projection of \mathcal{X} onto \mathcal{X}_0^\perp so that every $z_0 \in \mathcal{X}$ can be written uniquely as $z_0 = Pz_0 + Qz_0$. Since the restriction of $e^{\mathcal{A}t}$ to \mathcal{X}_0 is just the identity operator on \mathcal{X}_0 we have $z(t) = Pz_0 + e^{\mathcal{A}_p t}Qz_0$, and the required estimate follows from (3.18) and the fact that $\|Q\| \leq 1$. \square

The eigenvalue 0 is removed by restricting the state space to the orthogonal complement of the eigenspace corresponding to the eigenvalue zero. Define the volume functional $\mathcal{V} : \mathcal{X} \rightarrow \mathbb{C}$ by

$$\mathcal{V}(A, u, h_0, h) = \int_0^\ell A(x) dx + A_T h_0 + A_T h.$$

It is clear that \mathcal{V} is a bounded linear functional on \mathcal{X} . Recall that $z = z_e + \tilde{z}$ where $z = (A, u, h_0, h)$, $z_e = (A_e, 0, h_{0e}, h_e)$ and $\tilde{z} = (\tilde{A}, \tilde{u}, \tilde{h}_0, \tilde{h})$ are the state, the equilibrium state and the deviation of the state from the equilibrium, respectively. By the conservation of mass we must have $\mathcal{V}(z) = \mathcal{V}(z_e) = V$ and this is equivalent to $\mathcal{V}(\tilde{z}) = 0$, i.e., $\tilde{z} \in \mathcal{N}(\mathcal{V})$. One can check that $\mathcal{N}(\mathcal{V}) = \mathcal{X}_0^\perp$. This means that \mathcal{X}_0^\perp is the *natural* state space for the deviations. Also, if $z(t, x) = e^{\mathcal{A}_p t}z^0(x)$ is the solution of the system then $\mathcal{V}(z(t, \cdot)) = 0$ for every $t \geq 0$ whenever $z^0 \in \mathcal{X}_0^\perp$. For this reason, we consider \mathcal{X}_0^\perp to be the state space in the next section.

4. A BOUNDARY CONTROL SYSTEM

Consider time varying control pressures $p_{f0}(t)$ and $p_f(t)$ applied to the left and the right tank, respectively. Linearizing about the numbers p_{f0}^* and p_f^* we have

$$\begin{aligned} \tilde{A}(t, 0) &= \gamma \tilde{h}_0(t) + \frac{\gamma}{\rho g} \tilde{p}_{f0}(t), \\ \tilde{A}(t, \ell) &= \gamma \tilde{h}(t) + \frac{\gamma}{\rho g} \tilde{p}_f(t) \end{aligned}$$

where $\tilde{p}_{f0}(t) = p_{f0}(t) - p_{f0}^*$ and $\tilde{p}_f(t) = p_f(t) - p_f^*$. Again for simplicity, we ignore the tildas and we let $p_0 = \frac{\gamma}{\rho g} p_{f0}$ and $p_1 = \frac{\gamma}{\rho g} p_f$. In this scenario, we have the system (1.8) with the boundary conditions

$$A(t, 0) = \gamma h_0(t) + p_0(t), \quad A(t, \ell) = \gamma h(t) + p_1(t), \quad t > 0. \quad (4.1)$$

Definition 4.1. For $A^0, u^0 \in L^2(0, \ell)$, $h_0^0, h^0 \in \mathbb{C}$ and $p_0, p_1 \in L_{loc}^2([0, \infty), \mathbb{C})$, the tuple (A, u, h_0, h) such that $A, u \in C([0, \infty), L^2(0, \ell))$ and $h_0, h \in C([0, \infty), \mathbb{C})$ is called a weak solution of the system (1.8) with initial conditions (1.10) and boundary

conditions (4.1) if

$$\left\{ \begin{array}{l} \langle A(t), \varphi \rangle_{L^2} + \gamma A_T(h_0(t), \eta_0) + \gamma A_T(h(t), \eta) \\ \quad = \langle A^0, \varphi \rangle_{L^2} + \gamma A_T(h_0^0, \eta_0) + \gamma A_T(h^0, \eta) + A_e \int_0^t \langle u(\sigma), \varphi_x \rangle_{L^2} d\sigma \\ \langle u(t), \psi \rangle_{L^2} = \langle u^0, \psi \rangle_{L^2} + \alpha \int_0^t \langle A(\sigma), \psi_x \rangle_{L^2} d\sigma - \beta \int_0^t \langle u(\sigma), \psi \rangle_{L^2} d\sigma \\ \quad + \alpha \int_0^t (\gamma h_0(\sigma) + p_0(\sigma), \psi(0)) - (\gamma h(\sigma) + p_1(\sigma), \psi(\ell)) d\sigma \end{array} \right.$$

for every $t \geq 0$, $\varphi, \psi \in H^1(0, \ell)$ and $\eta_0, \eta \in \mathbb{C}$ such that $\varphi(0) = \gamma \eta_0$ and $\varphi(\ell) = \gamma \eta$.

To prove the existence of such weak solutions, the system will be expressed as a boundary control system using well-known results in control theory. Because the velocity component of the eigenvector corresponding to the eigenvalue 0 vanishes, the system is not approximately controllable in \mathcal{X} , cf. the observation operator \mathcal{B}^* in Theorem 4.2 below. For this reason the system is restricted to the state space \mathcal{X}_0^\perp .

Denote by $\mathcal{Z} = (H^1(0, \ell) \times H^1(0, \ell) \times \mathbb{C}^2) \cap \mathcal{X}_0^\perp$ the solution space endowed with the product norm of $H^1(0, \ell) \times H^1(0, \ell) \times \mathbb{C}^2$. Our input space is \mathbb{C}^2 and the state space is \mathcal{X}_0^\perp . Note that \mathcal{Z} is continuously embedded in \mathcal{X}_0^\perp . Let $\mathcal{D}(\mathcal{A}_p^*)$ be endowed with the graph norm. Then $\mathcal{D}(\mathcal{A}_p^*) \subset \mathcal{X}_0^\perp \subset \mathcal{D}(\mathcal{A}_p^*)'$ with continuous and dense embeddings and we have

$$\langle z, \zeta \rangle_{\mathcal{D}(\mathcal{A}_p^*)' \times \mathcal{D}(\mathcal{A}_p^*)} = \langle z, \zeta \rangle_{\mathcal{X}}, \quad \forall z \in \mathcal{X}_0^\perp, \zeta \in \mathcal{D}(\mathcal{A}_p^*). \quad (4.2)$$

Furthermore, we can see that $\mathcal{A}_p^* \in \mathcal{L}(\mathcal{D}(\mathcal{A}_p^*), \mathcal{X}_0^\perp)$ so that $(\mathcal{A}_p^*)^* \in \mathcal{L}(\mathcal{X}_0^\perp, \mathcal{D}(\mathcal{A}_p^*)')$, where the state space \mathcal{X}_0^\perp is identified with its dual. The operator $(\mathcal{A}_p^*)^*$ can be viewed as an extension of \mathcal{A}_p to \mathcal{X}_0^\perp . For more details on the interpolation and extrapolation spaces for semigroups the reader may consult [4, p. 123–127].

Let $\mathcal{F} : \mathcal{Z} \rightarrow \mathcal{X}_0^\perp$ and $\mathcal{G} : \mathcal{Z} \rightarrow \mathbb{C}^2$ be given by

$$\mathcal{F}(A, u, h_0, h) = \begin{pmatrix} -A_e u_x \\ -\alpha A_x - \beta u \\ -\frac{A_e}{A_T} u(0) \\ \frac{A_e}{A_T} u(\ell) \end{pmatrix}$$

and

$$\mathcal{G}(A, u, h_0, h) = \begin{pmatrix} A(0) - \gamma h_0 \\ A(\ell) - \gamma h \end{pmatrix}.$$

Note that $\mathcal{F} \in \mathcal{L}(\mathcal{Z}, \mathcal{X}_0^\perp)$, $\mathcal{G} \in \mathcal{L}(\mathcal{Z}, \mathbb{C}^2)$, $\mathcal{N}(\mathcal{G}) = \mathcal{D}(\mathcal{A}_p)$, $\mathcal{R}(\mathcal{G}) = \mathbb{C}^2$ and $\mathcal{F}|_{\mathcal{D}(\mathcal{A}_p)} = \mathcal{A}_p$. As a consequence, $(\mathcal{F}, \mathcal{G})$ is a boundary control system. Then according to [22, Proposition 10.1.2] there exists a unique operator $\mathcal{B} \in \mathcal{L}(\mathbb{C}^2, \mathcal{D}(\mathcal{A}_p^*)')$, called the *control operator*, such that $\mathcal{F}z = ((\mathcal{A}_p^*)^* + \mathcal{B}\mathcal{G})z$ for all $z \in \mathcal{Z}$. A characterization of this control operator is given in the following theorem.

Theorem 4.2. *The input control operator $\mathcal{B} \in \mathcal{L}(\mathbb{C}^2, \mathcal{D}(\mathcal{A}_p^*)')$ is given by*

$$\mathcal{B}(c_1, c_2) = -(\mathcal{A}_p^*)^* \left(\begin{pmatrix} \kappa \\ 0 \\ \frac{1}{\gamma}(\kappa - 1) \\ \frac{1}{\gamma}\kappa \end{pmatrix} c_1 + \begin{pmatrix} \kappa \\ 0 \\ \frac{1}{\gamma}\kappa \\ \frac{1}{\gamma}(\kappa - 1) \end{pmatrix} c_2 \right), \quad (4.3)$$

where $(c_1, c_2) \in \mathbb{C}^2$ and $\kappa = \frac{A_T}{\gamma\ell + 2A_T}$. Its adjoint $\mathcal{B}^* \in \mathcal{L}(\mathcal{D}(\mathcal{A}_p^*), \mathbb{C}^2)$ is given by

$$\mathcal{B}^*(B, v, g_0, g) = \begin{pmatrix} v(0) \\ -v(\ell) \end{pmatrix}, \quad (B, v, g_0, g) \in \mathcal{D}(\mathcal{A}_p^*). \quad (4.4)$$

Proof. Given $(c_1, c_2) \in \mathbb{C}^2$, consider the problem $\mathcal{F}(A, u, h_0, h) = 0$ with boundary conditions $\mathcal{G}(A, u, h_0, h) = (c_1, c_2)$. This implies $u = 0$, A is constant, $A - \gamma h_0 = c_1$ and $A - \gamma h = c_2$. Since $(A, u, h_0, h) \in \mathcal{X}_0^\perp = \mathcal{N}(\mathcal{V})$, $A\ell + A_T h_0 + A_T h = 0$. Note that the unique solution of $\mathcal{F}z = 0$ with $\mathcal{G}z = (c_1, c_2)$ is given by $-(\mathcal{A}_p^*)^* z = \mathcal{B}(c_1, c_2)$. Solving the linear system for $(A, h_0, h) \in \mathbb{C}^3$ in terms of c_1 and c_2 we can see that $\mathcal{B} : \mathbb{C}^2 \rightarrow \mathcal{D}(\mathcal{A}_p^*)'$ is given by (4.3).

For $z = (A, u, h_0, h) \in \mathcal{Z}$ and $\zeta = (B, v, g_0, g) \in \mathcal{D}(\mathcal{A}_p^*)$ we obtain from (4.2) that

$$\begin{aligned} \langle \mathcal{G}z, \mathcal{B}^*\zeta \rangle_{\mathbb{C}^2} &= \langle \mathcal{B}\mathcal{G}z, \zeta \rangle_{\mathcal{D}(\mathcal{A}_p^*)' \times \mathcal{D}(\mathcal{A}_p^*)} = \langle \mathcal{F}z - (\mathcal{A}_p^*)^* z, \zeta \rangle_{\mathcal{D}(\mathcal{A}_p^*)' \times \mathcal{D}(\mathcal{A}_p^*)} \\ &= \langle \mathcal{F}z, \zeta \rangle_{\mathcal{X}} - \langle z, \mathcal{A}_p^* \zeta \rangle_{\mathcal{X}}. \end{aligned}$$

Integrating by parts and using the surjectivity of \mathcal{G} we obtain (4.4). \square

In the above theorem, we have a representation of the control operator \mathcal{B} in terms of the extension of the operator \mathcal{A}_p . However, the more important item to use in the controllability of the boundary control system, at least in our case, is the adjoint \mathcal{B}^* of the control operator.

We shall make use of the Riesz basis approach to study the above boundary control system. We refer to [13] for various examples in this direction. From Theorem 3.2, the eigenvalues of \mathcal{A}_p^* satisfy

$$\liminf_{|n| \rightarrow \infty} |\Im \lambda_n - \Im \lambda_{n+1}| = \frac{\sqrt{\alpha A_e} \pi}{\ell} \quad (4.5)$$

and, in particular the uniform gap property

$$\gamma_0 := \inf_{\substack{\lambda, \mu \in \sigma_p(\mathcal{A}_p^*) \\ \lambda \neq \mu}} |\lambda - \mu| > 0. \quad (4.6)$$

Now we are ready to state and prove the main result of this section. A direct application of Ingham's Theorem [10, 13] yields the exact controllability of the boundary control system for any time $\tau > \frac{2\pi}{\gamma_0}$ where γ_0 is the gap of the eigenvalues of \mathcal{A}_p^* given by (4.6). However, in general this gap is less than that of the asymptotic distance between consecutive eigenvalues. To provide a smaller lower bound for the time of exact controllability we will separate the low and high frequencies as in [22, Proposition 8.1.3]. However, we need to modify the arguments in the said proposition since the eigenvectors are not orthogonal anymore, i.e., we generalize the proposition in such a way that it is still true for the case where the orthonormal basis is replaced by a Riesz basis.

Theorem 4.3. *Suppose that $\beta \geq 0$. Then the boundary control system $(\mathcal{F}, \mathcal{G})$ is exactly controllable in time τ , if $\tau > \tau^* := \frac{2\ell}{\sqrt{\alpha A_e}}$. That means, for any $z^0, z^1 \in \mathcal{X}_0^\perp$ there exists $(p_0, p_1) \in L^2([0, \tau], \mathbb{C}^2)$ such that the weak solution $z \in C([0, \tau], \mathcal{X}_0^\perp)$ of the system (1.8) with initial conditions (1.10) and boundary conditions (4.1) satisfies $z(\tau) = z^1$.*

Proof. The proof of the existence, uniqueness and regularity of the weak solution will be provided later (see Theorem 4.4 below). We divide the proof into several steps for ease of reading. Moreover, we first assume that $\beta \neq 2\mu_n$ for all $n \in \mathbb{N}$.

Step 1. Let us prove that \mathcal{B} is an admissible control operator for $(e^{\mathcal{A}_p t})_{t \geq 0}$, or equivalently, \mathcal{B}^* is an admissible observation operator for the adjoint semigroup $(e^{\mathcal{A}_p^* t})_{t \geq 0}$. The latter means that for each $t \geq 0$ there exists $C_t > 0$ such that $\int_0^t |\mathcal{B}^* e^{\mathcal{A}_p^* s} z|^2 ds \leq C_t \|z\|_{\mathcal{X}}^2$ for all $z \in \mathcal{D}(\mathcal{A}_p^*)$. According to (3.10), (3.11) and the asymptotic behavior of μ_n given in (3.9) we have $\frac{1}{\mu_n^2} \|z_n^*\|_{\mathcal{X}}^2 \rightarrow \frac{A_T^2 \ell}{\gamma^2 \alpha A_e^2}$ as $|n| \rightarrow \infty$. Using this, we can see that

$$0 < d_y := \inf_{n \in \mathbb{Z}^*} \frac{|\psi_n(y)|^2}{\|z_n^*\|_{\mathcal{X}}^2} \leq \sup_{n \in \mathbb{Z}^*} \frac{|\psi_n(y)|^2}{\|z_n^*\|_{\mathcal{X}}^2} =: D_y < \infty, \quad y = 0, \ell. \quad (4.7)$$

Let $M = M(\beta)$ the largest integer such that $\beta > 2\mu_M$. Thus λ_n is real whenever $|n| \leq M$. From (3.16), Ingham's Theorem [10, 13], (4.7) and (3.15) we have

$$\begin{aligned} \int_0^t |\mathcal{B}^* e^{\mathcal{A}_p^* s} z|^2 ds &= \sum_{y=0, \ell} \int_0^t \left| \sum_{n \in \mathbb{Z}^*} e^{\lambda_n s} \langle z, \tilde{z}_n \rangle_{\mathcal{X}} \frac{\psi_n(y)}{\|z_n^*\|_{\mathcal{X}}} \right|^2 ds \\ &\leq 2 \sum_{y=0, \ell} \left(\int_0^t \sum_{0 < |n| \leq M} e^{2\lambda_n s} |\langle z, \tilde{z}_n \rangle_{\mathcal{X}}|^2 \frac{|\psi_n(y)|^2}{\|z_n^*\|_{\mathcal{X}}^2} \right. \\ &\quad \left. + \int_0^t \sum_{|n| > M} e^{(-\beta/2 + i\Im \lambda_n)s} |\langle z, \tilde{z}_n \rangle_{\mathcal{X}}|^2 \frac{|\psi_n(y)|^2}{\|z_n^*\|_{\mathcal{X}}^2} ds \right) \\ &\leq C_t \sum_{y=0, \ell} \sum_{n \in \mathbb{Z}^*} |\langle z, \tilde{z}_n \rangle_{\mathcal{X}}|^2 \frac{|\psi_n(y)|^2}{\|z_n^*\|_{\mathcal{X}}^2} \leq C_t (D_0 + D_\ell) c^{-2} \|z\|_{\mathcal{X}}^2 \end{aligned}$$

for all $z \in \mathcal{D}(\mathcal{A}_p^*)$ and $t \geq 0$. Hence \mathcal{B}^* is an admissible observation operator for $(e^{\mathcal{A}_p^* t})_{t \geq 0}$.

Step 2. Now we separate the eigenfunctions into two parts. From (4.5), for arbitrary $\epsilon > 0$, there exists a positive integer $N = N(\epsilon)$ such that $\Re \lambda_n = -\beta/2$ for all $|n| > N$ and

$$\inf_{\substack{|m|, |n| > N \\ m \neq n}} |\Im \lambda_n - \Im \lambda_m| \geq \frac{\sqrt{\alpha A_e}}{\ell} \pi - \epsilon. \quad (4.8)$$

Consider the subspace $\mathcal{X}_1 = \text{span}(z_n^*)_{0 < |n| \leq N}$ of \mathcal{X}_0^\perp . It is clear that $(z_n^*)_{0 < |n| \leq N}$ is linearly independent and so it forms a basis for \mathcal{X}_1 . For each $t \in \mathbb{R}$, let $T(t)^*$ be the restriction of $e^{\mathcal{A}_p^* t}$ to \mathcal{X}_1 . We note that by construction $\sigma(\mathcal{A}_p^*|_{\mathcal{X}_1}) = (\lambda_n)_{0 < |n| \leq N}$.

Let $\mathcal{X}_2 = \text{clos span}(z_n^*/\|z_n^*\|_{\mathcal{X}})_{|n| > N}$ and \mathcal{A}_q^* be the part of \mathcal{A}_p^* in \mathcal{X}_2 . Notice that \mathcal{A}_q^* have also compact resolvent and $\sigma(\mathcal{A}_q^*) = \sigma(\mathcal{A}_p^*) \setminus (\lambda_n)_{0 < |n| \leq N}$. Since $\text{span}(z_n^*/\|z_n^*\|_{\mathcal{X}})_{|n| > N}$ is invariant under the \mathcal{C}_0 -group generated by \mathcal{A}_p^* , its closure is

also invariant under this \mathcal{C}_0 -group. Thus \mathcal{A}_q^* also generates a \mathcal{C}_0 -group on \mathcal{X}_2 and $e^{\mathcal{A}_p^* t}|_{\mathcal{X}_2} = e^{\mathcal{A}_q^* t}$ for all $t \in \mathbb{R}$.

Step 3. From the discussions in the previous step, we can see that the normalized eigenvectors $(z_n^*/\|z_n^*\|_{\mathcal{X}})_{|n|>N}$ of \mathcal{A}_q^* form a Riesz basis for \mathcal{X}_2 . Let \mathcal{B}_q^* be the restriction of \mathcal{B}^* to $\mathcal{D}(\mathcal{A}_q^*)$. A similar application of Ingham's Theorem as above shows that \mathcal{B}_q^* is an admissible observation operator for the semigroup generated by \mathcal{A}_q^* . Moreover, from Ingham's Theorem and (3.15) we have the inverse estimate

$$\begin{aligned} \int_0^\tau |\mathcal{B}_q^* e^{\mathcal{A}_q^* t} z|^2 dt &\geq \sum_{y=0,\ell} e^{-\beta\tau} \int_0^\tau \left| \sum_{|n|>N} e^{i\Im\lambda_n s} \langle z, \tilde{z}_n \rangle_{\mathcal{X}} \frac{\psi_n(y)}{\|z_n^*\|_{\mathcal{X}}} \right|^2 ds \\ &\geq c_\tau \sum_{y=0,\ell} \sum_{|n|>N} |\langle z, \tilde{z}_n \rangle_{\mathcal{X}}|^2 \frac{|\psi_n(y)|^2}{\|z_n^*\|_{\mathcal{X}}^2} \geq c_\tau (d_0 + d_\ell) C^{-2} \|z\|_{\mathcal{X}}^2 \end{aligned}$$

for every $z \in \mathcal{D}(\mathcal{A}_q^*)$ and $\tau > \frac{2\pi\ell}{\sqrt{\alpha A_e \pi - \epsilon\ell}}$. Thus, the pair $(\mathcal{A}_q^*, \mathcal{B}_q^*)$ is exactly observable in time $\tau > \frac{2\pi\ell}{\sqrt{\alpha A_e \pi - \epsilon\ell}}$.

Step 4. Because $\mathcal{A}_p^*|_{\mathcal{X}_1} \in \mathcal{L}(\mathcal{X}_1) \simeq \mathcal{L}(\mathbb{C}^{2N})$, $\mathcal{B}^*|_{\mathcal{X}_1} \in \mathcal{L}(\mathcal{X}_1, \mathbb{C}^2) \simeq \mathcal{L}(\mathbb{C}^{2N}, \mathbb{C}^2)$ and $\mathcal{B}^*|_{\mathcal{X}_1} z_n^* \neq 0$ for every $0 < |n| \leq N$, the Hautus test for finite-dimensional systems implies that $(\mathcal{A}_p^*|_{\mathcal{X}_1}, \mathcal{B}^*|_{\mathcal{X}_1})$ is observable. Since $\sigma(\mathcal{A}_p^*|_{\mathcal{X}_1}) \cap \sigma(\mathcal{A}_q^*) = \emptyset$, according to [22, Proposition 6.4.2] (see also [21]), the pairs $(\mathcal{A}_p^*|_{\mathcal{X}_1}, \mathcal{B}^*|_{\mathcal{X}_1})$ and $(\mathcal{A}_q^*, \mathcal{B}_q^*)$ are simultaneously exactly observable, in other words, there exists a constant $\tilde{c}_\tau > 0$ such that for all $(v, w) \in \mathcal{X}_1 \times \mathcal{D}(\mathcal{A}_q^*)$ it holds that

$$\int_0^\tau |\mathcal{B}^*|_{\mathcal{X}_1} T(t)^* v + \mathcal{B}_q^* e^{\mathcal{A}_q^* t} w|^2 dt \geq \tilde{c}_\tau (\|v\|_{\mathcal{X}}^2 + \|w\|_{\mathcal{X}}^2) \quad (4.9)$$

for every $\tau > \frac{2\pi\ell}{\sqrt{\alpha A_e \pi - \epsilon\ell}}$. For $k \geq N$ define the k th truncation of $z \in \mathcal{D}(\mathcal{A}_p^*)$ by

$$z^k = \sum_{0 < |n| \leq k} \langle z, \tilde{z}_n \rangle_{\mathcal{X}} \frac{z_n^*}{\|z_n^*\|_{\mathcal{X}}}$$

Then $z^k \rightarrow z$ in \mathcal{X} . Since $z^N \in \mathcal{X}_1$ and $z^k - z^N \in \text{span}(\frac{z_n^*}{\|z_n^*\|_{\mathcal{X}}})_{|n|>N} \subset \mathcal{D}(\mathcal{A}_q^*)$ it follows from (3.15) and (4.9) that for any $k > N$ we have

$$\begin{aligned} \int_0^\tau |\mathcal{B}^* e^{\mathcal{A}_p^* t} z^k|^2 dt &= \int_0^\tau |\mathcal{B}^*|_{\mathcal{X}_1} T(t)^* z^N + \mathcal{B}_q^* e^{\mathcal{A}_q^* t} (z^k - z^N)|^2 dt \\ &\geq \tilde{c}_\tau (\|z^N\|_{\mathcal{X}}^2 + \|z^k - z^N\|_{\mathcal{X}}^2) \geq \tilde{c}_\tau c^2 \sum_{0 < |n| \leq k} |\langle z^k, \tilde{z}_n^* \rangle_{\mathcal{X}}|^2 \geq \tilde{c}_\tau c^2 C^{-2} \|z^k\|_{\mathcal{X}}^2. \end{aligned}$$

Because \mathcal{B}^* is an admissible observation operator for the semigroup generated by \mathcal{A}_p^* , letting $k \rightarrow \infty$ in the last inequality we obtain the inverse estimate

$$\int_0^\tau |\mathcal{B}^* e^{\mathcal{A}_p^* t} z|^2 dt \geq \tilde{c}_\tau c^2 C^{-2} \|z\|_{\mathcal{X}}^2.$$

Therefore $(\mathcal{A}_p^*, \mathcal{B}^*)$ is exactly observable in time $\tau > \frac{2\pi\ell}{\sqrt{\alpha A_e \pi - \epsilon\ell}}$, and since $\epsilon > 0$ is arbitrary, this pair is exactly observable in time $\tau > \frac{2\ell}{\sqrt{\alpha A_e}}$.

If $\beta = 2\mu_n$ for some $n \in \mathbb{N}$ then one applies the above argument to the closure of the span of the normalized eigenvectors of \mathcal{A}_p^* . Notice that $\mathcal{B}^* Z^* \neq 0$. Then

the series representation (3.17) together with Haraux's Theorem [13, Theorem 4.5] imply the exact observability in the state space \mathcal{X}_0^\perp for any time $\tau > \tau^*$. In any case, the conclusion of the theorem now follows from the well known duality of exact controllability and exact observability (e.g. [22, Theorem 11.2.1]). \square

Now we address the existence and uniqueness of weak solutions of (1.8) under the boundary conditions (4.1). Let $p_0, p_1 \in L_{\text{loc}}^2([0, \infty), \mathbb{C})$ and $z_0 \in \mathcal{X}_0^\perp$. Since \mathcal{B} is an admissible control operator for the semigroup generated by \mathcal{A}_p , then using the variation of parameters formula, the function

$$z(t) = e^{\mathcal{A}_p t} z_0 + \int_0^t e^{(\mathcal{A}_p^*)^*(t-s)} \mathcal{B}(p_0(s), p_1(s)) ds \quad \text{in } \mathcal{D}(\mathcal{A}_p^*)' \quad (4.10)$$

is the unique function that satisfies $z \in C([0, \infty), \mathcal{X}_0^\perp)$ and

$$z(t) - z(0) = \int_0^t ((\mathcal{A}_p^*)^* z(s) + \mathcal{B}(p_0(s), p_1(s))) ds$$

for all $t \geq 0$ (cf. [22, Remark 4.2.6]). The integral is computed in $\mathcal{D}(\mathcal{A}_p^*)'$. Therefore, for each $\zeta \in \mathcal{D}(\mathcal{A}_p^*)$ we have from (4.2)

$$\langle z(t) - z(0), \zeta \rangle_{\mathcal{X}} = \int_0^t (\langle z(s), \mathcal{A}_p^* \zeta \rangle_{\mathcal{X}} + \langle (p_0(s), p_1(s)), \mathcal{B}^* \zeta \rangle_{\mathbb{C}^2}) ds$$

and using definition of \mathcal{B}^* provided in Theorem 4.2, we can see that the components of z comprise the unique weak solution of (1.8) with boundary conditions (4.1).

Theorem 4.4. *If $z_0 \in \mathcal{X}_0^\perp$ and $p_0, p_1 \in L_{\text{loc}}^2([0, \infty), \mathbb{C})$ then (1.8), (1.10), (4.1) has a unique weak solution $z \in C([0, \infty), \mathcal{X}_0^\perp) \cap H_{\text{loc}}^1((0, \infty), \mathcal{D}(\mathcal{A}_p^*)')$ and for every $T > 0$ there exists $C = C(T) > 0$ such that*

$$\|z\|_{H^1((0,T), \mathcal{D}(\mathcal{A}_p^*)')} + \|z\|_{C([0,T], \mathcal{X}_0^\perp)} \leq C(\|z^0\|_{\mathcal{X}} + \|(p_0, p_1)\|_{L^2((0,T), \mathbb{C}^2)}) \quad (4.11)$$

for all $z^0 \in \mathcal{X}_0^\perp$ and $(p_0, p_1) \in L^2((0, T), \mathbb{C}^2)$. Moreover, if $z^0 \in \mathcal{Z}$ and $p_0, p_1 \in H^1((0, T), \mathbb{C})$ satisfy the compatibility condition $\mathcal{G}z^0 = (p_0(0), p_1(0))$ then the solution z is in $C([0, T], \mathcal{Z}) \cap C^1([0, T], \mathcal{X}_0^\perp)$.

Proof. The first statement was already explained above and the estimate (4.11) can be shown from (4.10), while the second statement is a direct application of [22, Proposition 10.1.8]. \square

Remark 4.5. *As in the proof of Theorem 4.3, it can be shown that \mathcal{B}^* is an admissible observation operator for the semigroup generated by \mathcal{A}_p . This implies the following: For any $z_0 \in \mathcal{D}(\mathcal{A}_p)$ the solution of the (unforced) system satisfies*

$$\|u(\cdot, 0)\|_{L^2(0,T)} + \|u(\cdot, \ell)\|_{L^2(0,T)} \leq C_T \|z_0\|_{\mathcal{X}}.$$

By a standard density argument, one can use this to define the traces $u(\cdot, 0)$, $u(\cdot, \ell) \in L^2(0, T)$ for the solution corresponding to the initial state $z_0 \in \mathcal{X}_0^\perp$. Note that these traces do not make sense by the usual trace theorem for Sobolev spaces because in general $u \in C([0, T], L^2(0, \ell))$. This is sometimes referred as a hidden regularity property of solutions, see [12, 14, 15].

The controllability result Theorem 4.3 still holds even if there is only one forcing function that is applied to either of the tanks. In this case, the control operator would be either the first or second component of \mathcal{B} according to where the control pressure is applied. The results can be also extended for two tanks with different horizontal cross sections. Now let us consider the case where the forcing is applied only at the left tank. In this case, the boundary operator $\mathcal{G}_0 : \mathcal{Z}_0 \rightarrow \mathbb{C}$ is defined by $\mathcal{G}_0(A, u, h_0, h) = A(0) - \gamma h_0$, where $\mathcal{Z}_0 := \{(A, u, h_0, h) \in H^1(0, \ell)^2 \times \mathbb{C}^2 : A(\ell) = \gamma h\} \cap \mathcal{X}_0^\perp$ is the corresponding solution space.

Theorem 4.6. *In the situation of Theorem 4.3, where \mathcal{G} is replaced by \mathcal{G}_0 , the pair $(\mathcal{A}_p, \mathcal{B}_0)$ is not approximately controllable for any time $0 < \tau < \tau^*$, where \mathcal{B}_0 is the control operator associated with the boundary control system $(\mathcal{F}, \mathcal{G}_0)$. In particular, $(\mathcal{A}_p, \mathcal{B}_0)$ is not exactly controllable for any time $0 < \tau < \tau^*$.*

Proof. From (3.3), there exists a positive integer M such that $|\frac{\tau^* \Im \lambda_{n+1}}{2\pi} - n| < \frac{1}{4}$ whenever $n > M$. By symmetry of the eigenvalues we have $|\frac{\tau^* \Im \lambda_{n-1}}{2\pi} - n| < \frac{1}{4}$ for all $n < -M$. Now according to the Generalized Kadec $\frac{1}{4}$ -Theorem [26, Corollary 2, p. 196], the system of exponentials $(e^{i2n\pi t/\tau^*})_{0 \leq |n| \leq M} \cup (e^{\lambda_{n+1}t})_{|n| > M}$ forms a Riesz basis for $L^2(0, \tau^*)$. Let $(g_n)_{n \in \mathbb{Z}}$ be the sequence biorthogonal to this Riesz basis. Given $0 < \tau < \tau^*$, let us take a nonzero element $F_1 \in L^2(0, \tau^* - \tau)$ such that

$$\int_0^{\tau^* - \tau} F_1(t) \overline{g_n(\tau + t)} dt = 0, \quad 0 \leq |n| \leq M,$$

that is, F_1 is in the orthogonal complement of the subspace of $L^2(0, \tau^* - \tau)$ spanned by the functions $(g_n(\tau + \cdot))_{0 \leq |n| \leq M}$. Define the nonzero element $F \in L^2(0, \tau^*)$ by $F(t) = 0$ if $0 \leq t \leq \tau$ and $F(t) = F_1(t - \tau)$ if $\tau < t \leq \tau^* = 2\ell/\sqrt{\alpha A_e}$.

Define

$$z = \sum_{|n| > M} \left(\langle F, g_n \rangle_{L^2(0, \tau^*)} \frac{\|z_{n+1}^*\|_{\mathcal{X}}}{\psi_{n+1}(0)} \right) \frac{z_{n+1}^*}{\|z_{n+1}^*\|_{\mathcal{X}}}.$$

This is a nonzero element of \mathcal{X}_0^\perp because $(\langle F, g_n \rangle_{L^2(0, \tau^*)} \|z_{n+1}^*\|_{\mathcal{X}} \psi_{n+1}(0)^{-1})_{|n| > M}$ is nonzero element in ℓ^2 . Note that by the uniqueness of the coefficients in a series of the elements of the Riesz basis, we must have $\langle F, g_n \rangle_{L^2(0, \tau^*)} \|z_{n+1}^*\|_{\mathcal{X}} \psi_{n+1}(0)^{-1} = \langle z, \tilde{z}_{n+1} \rangle_{\mathcal{X}}$ for all $|n| > M$ and so

$$\mathcal{B}_0^* e^{\mathcal{A}_p^* t} z = \sum_{|n| > M} e^{\lambda_{n+1}t} \langle z, \tilde{z}_{n+1} \rangle_{\mathcal{X}} \frac{\psi_{n+1}(0)}{\|z_{n+1}^*\|_{\mathcal{X}}} = \sum_{|n| > M} \langle F, g_n \rangle_{L^2(0, \tau^*)} e^{\lambda_{n+1}t} = F(t).$$

The terms with indices $0 \leq |n| \leq M$ vanish by construction of F . Hence there exists $z \in \mathcal{X}_0^\perp \setminus \{0\}$ such that $\mathcal{B}_0^* e^{\mathcal{A}_p^* (\cdot)} z = 0$ in $L^2(0, \tau)$. Therefore $\mathcal{N}(\mathcal{B}_0^* e^{\mathcal{A}_p^* (\cdot)}) \neq \{0\}$ so that the adjoint system $(\mathcal{A}_p^*, \mathcal{B}_0^*)$ is not approximately observable in time τ for any $0 < \tau < \tau^*$. The theorem follows from the duality of approximate observability and approximate controllability. \square

5. SYSTEM WITH DISTRIBUTED CONTROL

One could also consider external control pressure applied to a part of the elastic tube, e.g. [18, 23, 2]. In this case, the linearized momentum equation becomes

$$\frac{\partial u}{\partial t} = -\alpha \frac{\partial A}{\partial x} - \beta u + P_c \chi_{[a,b]}, \quad (5.1)$$

where $P_c \in L^2_{\text{loc}}([0, \infty), L^2(0, \ell))$, $0 < a < b < \ell$. In the literature, the control has to vanish at the endpoints of the subinterval $[a, b]$ where it is applied, however, we consider the general case where this vanishing condition is not assumed.

In the present situation, the control operator $\mathcal{B}_1 : L^2(0, \ell) \rightarrow \mathcal{X}_0^\perp$ is bounded and given by $\mathcal{B}_1 P_c = (0, P_c \chi_{[a,b]}, 0, 0)$. For each $z = (A, u, h_0, h) \in \mathcal{X}_0^\perp$ and $P_c \in L^2(0, \ell)$ we have $\langle \mathcal{B}_1 P_c, z \rangle_{\mathcal{X}} = \frac{1}{\alpha} \langle P_c, u \chi_{[a,b]} \rangle_{L^2(0, \ell)}$. Thus, the operator $\mathcal{B}_1^* : \mathcal{X}_0^\perp \rightarrow L^2(0, \ell)$ is given by $\mathcal{B}_1^*(A, u, h_0, h) = \frac{1}{\alpha} u \chi_{[a,b]}$. We have the following result, whose proof is similar as in the previous section, and hence it is omitted.

Theorem 5.1. *The pair $(\mathcal{A}_p, \mathcal{B}_1)$ is exactly controllable in time τ if $\tau > \frac{2\ell}{\sqrt{\alpha A_e}}$.*

6. APPENDIX

We prove the equivalence of (2.2) and (2.3) stated in the proof of the well-posedness in Section 2. Notice that (2.2) is the system of equations

$$\begin{cases} \lambda A + A_e u_x &= B \\ (\lambda + \beta)u + \alpha A_x &= v \\ \lambda h_0 + \frac{A_e}{A_T} u(0) &= g_0 \\ \lambda h - \frac{A_e}{A_T} u(\ell) &= g. \end{cases} \quad (6.1)$$

Suppose that (2.2), and hence (6.1), has a solution (A, u, h_0, h) in $\mathcal{D}(\mathcal{A})$. Multiplying the first equation in (6.1) by $\frac{\gamma}{A_T} \bar{\psi}$ for $\psi \in H^1(0, \ell)$, integrating by parts, solving for u in the second equation of (6.1) and using the boundary conditions we obtain (2.3).

Conversely, let $A \in H^1(0, \ell)$ satisfy (2.3) for all $\psi \in H^1(0, \ell)$. Define

$$u = \frac{1}{\lambda + \beta} (v - \alpha A_x), \quad (6.2)$$

$$h_0 = \frac{1}{\lambda} \left(g_0 - \frac{A_e}{A_T} u(0) \right), \quad (6.3)$$

$$h = \frac{1}{\lambda} \left(g + \frac{A_e}{A_T} u(\ell) \right). \quad (6.4)$$

Notice that u solves the second equation of (6.1) while (6.3) and (6.4) are the third and fourth. From (2.3) and (6.2) we have

$$\begin{aligned} \frac{\gamma}{A_T} \int_0^\ell (\lambda A(x) - B(x)) \bar{\psi}(x) dx &= \frac{\gamma}{A_T} \int_0^\ell A_e u(x) \bar{\psi}_x(x) dx + (\gamma g_0 - \lambda A(0)) \bar{\psi}(0) \\ &\quad + (\gamma g - \lambda A(\ell)) \bar{\psi}(\ell). \end{aligned} \quad (6.5)$$

Since the above equation is true for all $\psi \in H^1(0, \ell)$, it also holds in particular for all test functions $\psi \in C_0^\infty(0, \ell)$, and so the above equation gives us

$$\int_0^\ell (B(x) - \lambda A(x)) \overline{\psi(x)} dx = - \int_0^\ell A_e u(x) \overline{\psi_x(x)} dx, \quad \forall \psi \in C_0^\infty(0, \ell),$$

which implies that $B - \lambda A = (A_e u)_x$ or $u_x = \frac{1}{A_e}(B - \lambda A) \in L^2(0, \ell)$. As a consequence, $u \in H^1(0, \ell)$ and the first equation in (6.1) holds. It remains to verify the boundary conditions $A(0) = \gamma h_0$ and $A(\ell) = \gamma h$. The left hand side of (6.5) can be written as

$$\begin{aligned} \frac{\gamma}{A_T} \int_0^\ell (\lambda A(x) - B(x)) \overline{\psi(x)} dx &= - \frac{\gamma A_e}{A_T} \int_0^\ell u_x(x) \overline{\psi(x)} dx \\ &= \frac{\gamma A_e}{A_T} (u(0) \overline{\psi(0)} - u(\ell) \overline{\psi(\ell)}) + \frac{\gamma A_e}{A_T} \int_0^\ell u(x) \overline{\psi_x(x)} dx, \end{aligned}$$

and therefore, upon using (6.3), (6.4) and (6.5) and the fact that $\lambda > 0$,

$$(\gamma h_0 - A(0)) \overline{\psi(0)} + (\gamma h - A(\ell)) \overline{\psi(\ell)} = 0 \quad (6.6)$$

for all $\psi \in H^1(0, \ell)$. Choosing appropriate functions ψ , this equation implies that $A(0) = \gamma h_0$ and $A(\ell) = \gamma h$. Therefore $(A, u, h_0, h) \in \mathcal{D}(\mathcal{A})$ and (6.1) holds.

REFERENCES

- [1] A. Bensoussan, G. Da Prato, M.C. Delfour and S.K. Mitter, *Representation and Control of Infinite Dimensional Systems*, second ed., Birkhäuser, Boston (2007).
- [2] A. Borzì and G. Propst, Numerical investigation of the Liebau phenomenon. *Z. Angew. Math. Phys* **54** (2003) 1050–1072.
- [3] W. Desch, E. Fašangová, J. Milota and G. Propst, Stabilization through viscoelastic boundary damping: a semigroup approach. *Semigroup Forum* **80** (2010) 405–415.
- [4] K.J. Engel and R. Nagel, *One-Parameter Semigroups for Linear Evolution Equations*. Springer-Verlag, New York (2000).
- [5] M.A. Fernández, V. Milišić and A. Quarteroni, Analysis of a geometrical multiscale blood flow model based on the coupling of ODEs and Hyperbolic PDEs. *Multiscale Model. Simul.* **4** (2005) 215–236.
- [6] B. Guo, Riesz basis approach to the stabilization of a flexible beam with a tip mass. *SIAM J. Control Optim.* **39** (2001) 1736–1747.
- [7] B. Guo, Riesz basis property and exponential stability of controlled Euler-Bernoulli beam equations with variable coefficients. *SIAM J. Control Optim.* **40** (2002) 1905–1923.
- [8] B. Guo, J.M. Wang and S.P. Wang, On the C_0 -semigroup generation and exponential stabilization resulting from a shear force feedback on a rotating beam. *Systems and Control Letters* **54** (2005) 557–574.

- [9] B. Guo and R. Yu, The Riesz basis property of discrete operators and applications to a Euler-Bernoulli beam equations with boundary linear feedback control. *IMA Journal of Mathematical Control and Information* **18** (2001) 241–251.
- [10] A.E. Ingham, Some trigonometrical inequalities with applications to the theory of series. *Math. Z.* **41** (1936) 367–379.
- [11] B. Jacob and H. Zwart, *Linear Port Hamiltonian Systems on Infinite-Dimensional Spaces*. Birkhäuser, Basel (2012).
- [12] V. Komornik, *Exact Controllability and Stabilization: the Multiplier Method*. Wiley-Masson, Paris-Chicester (1994).
- [13] V. Komornik and P. Loret, *Fourier Series in Control Theory*. Springer-Verlag, New York (2005).
- [14] I. Lasiecka and R. Triggiani, Regularity of hyperbolic equations under $L^2(0, T; L^2(\Gamma))$ boundary terms. *Appl. Math. and Optimiz.* **10** (1983) 275–286
- [15] J.-L. Lions, *Contrôle des systèmes distribués singuliers*. Gauthiers-Villars, Paris, (1968).
- [16] M. Miklavčič, *Applied Functional Analysis and Partial Differential Equations*. World Scientific, Singapore (1998).
- [17] J.T. Ottesen, Valveless pumping in a fluid-filled closed elastic tube-system: one-dimensional theory with experimental validation. *J. Math. Biol.* **46** (2003) 309–332.
- [18] H.J. Rath and I. Teipel, Der Fördereffekt in ventillosen, elastischen Leitungen. *Z. Angew. Math. Phys.* **29** (1978) 123–133.
- [19] W. Ruan, A coupled system of ODEs and quasilinear hyperbolic PDEs arising in a multiscale blood flow model. *J. Math. Anal. Appl.* **343** (2008) 778–798.
- [20] O. Staffans, *Well-Posed Linear Systems*. Cambridge University Press (2005).
- [21] M. Tucsnak and G. Weiss, Simultaneous exact controllability and some applications. *SIAM J. Control Optim.* **38** (2000) 1408–1427.
- [22] M. Tucsnak and G. Weiss, *Observation and Control for Operator Semigroups*. Birkhäuser-Verlag, Basel (2009).
- [23] H.J. von Bredow, Untersuchung eines ventillosen Pumpprinzips. *Fortschr. Ber. VDI-Zeitschr. Reihe* **7** (1968).
- [24] G. Xu and B. Guo, Riesz basis property of evolution equations in Hilbert spaces and application to a coupled string equation. *SIAM J. Control Optim.* **42** (2003) 966–984.
- [25] C.-Z. Xu and G. Weiss, Eigenvalues and eigenvectors of semigroup generators obtained from diagonal generators by feedback. *Communications in Information and Systems* **11** (2011) 71–104.
- [26] R. Young, *An Introduction to Nonharmonic Fourier Analysis*. Academic Press, New York (1980).